

3UR-FE Accessory Drive Belt Tensioner

Service Category Engine/Hybrid System

Section Engine Mechanical

Market USA

Toyota Supports
 ASE Certification 

Applicability

YEAR(S)	MODEL(S)	ADDITIONAL INFORMATION
2007 – 2008	Tundra	Engine(s): 3UR VDS(s): BV541, BV581, CV541, DV541, DV581, EV541, EV581, JV521, KV521, LV521, MV521, RV541, RV581, SV541

Introduction

Some customers may experience an abnormal noise from the engine accessory drive belt area. An improved accessory drive belt tensioner assembly has been developed to keep the tensioner pulley in alignment with the other pulleys. If the tensioner pulley is out of alignment, use the procedure in this bulletin to address the customer's concern.

Production Change Information

This TSB applies to vehicles produced **BEFORE** the Production Change Effective VINs shown below.

MODEL	PLANT	DRIVETRAIN	WHEEL BASE	PRODUCTION CHANGE EFFECTIVE VIN
Tundra	TMMI	2WD	3700 mm (145.7 in.)	5TB*V5#1*8S477440
		4WD		5TB*V5#1*8S500080
	TMMTX	2WD	3220 mm (126.8 in.)	5TF*V5#1*8X002623
			3700 mm (145.7 in.)	5TF*V5#1*8X043290
			4180 mm (164.6 in.)	5TF*V5#1*8X005117
		4WD	3220 mm (126.8 in.)	5TF*V5#1*8X002651
			3700 mm (145.7 in.)	5TF*V5#1*8X043415
			4180 mm (164.6 in.)	5TF*V5#1*8X006010

Parts Information

PREVIOUS PART NUMBER	CURRENT PART NUMBER	PART NAME	QTY
16620-0S010	Same	Tensioner Assembly, V-Ribbed Belt	1

3UR-FE Accessory Drive Belt Tensioner

Warranty Information

OP CODE	DESCRIPTION	TIME	OFF	T1	T2
EG8041	R & R Accessory Drive Belt Tensioner	0.5	16620-0S010	91	14

APPLICABLE WARRANTY

- This repair is covered under the Toyota Comprehensive Warranty. This warranty is in effect for 36 months or 36,000 miles, whichever occurs first, from the vehicle's in-service date.
- Warranty application is limited to correction of a problem based upon a customer's specific complaint.

Repair Procedure

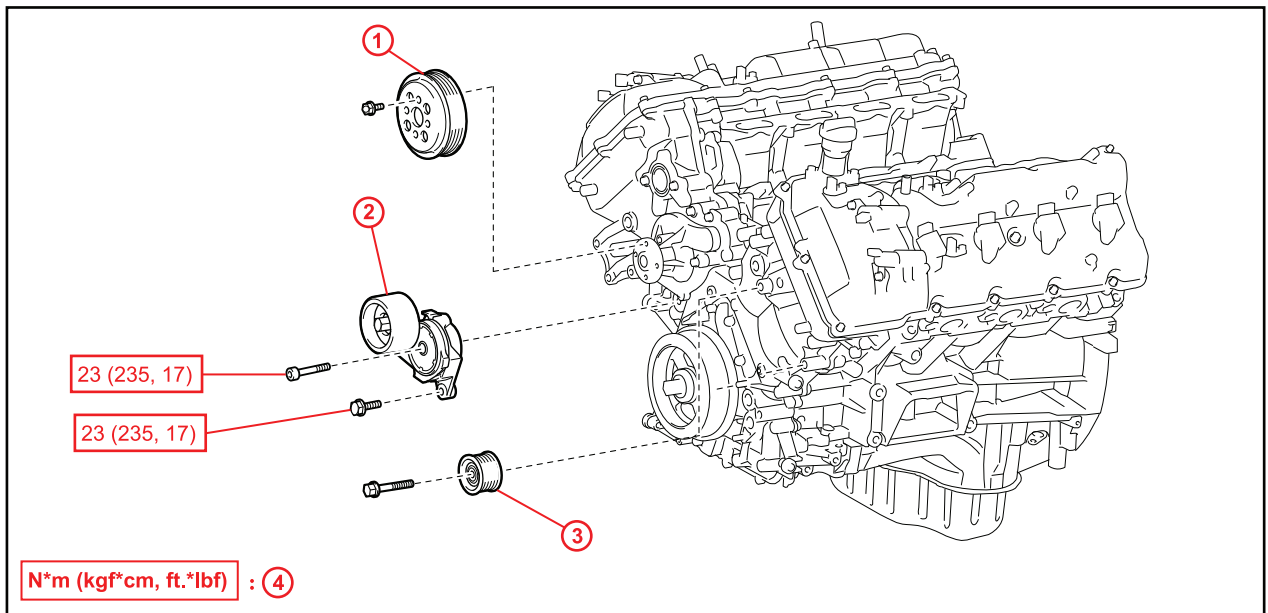
1. Remove the drive belt.

Refer to the Technical Information System (TIS), applicable model year Tundra Repair Manual:

[2007 / 2008 Tundra, Engine/Hybrid System – Engine Mechanical – “3UR-FE Engine Mechanical: Drive Belt: Removal”](#)

2. Remove the drive belt tensioner assembly.

Figure 1.



1	Water Pump Pulley
2	V-Ribbed Belt Tensioner Assembly

3	No. 1 Idler Pulley Sub-assembly
4	Specified Torque

3UR-FE Accessory Drive Belt Tensioner

Repair Procedure (Continued)

3. Replace the drive belt tensioner assembly.

Torque: 23 N*m (235 kgf*cm, 17 ft*lbf)

4. Replace the drive belt.

Refer to TIS:

[2007](#) / [2008](#) Tundra, *Engine/Hybrid System – Engine Mechanical – “3UR-FE Engine Mechanical: Drive Belt: Installation”*

5. Confirm the condition has been remedied.