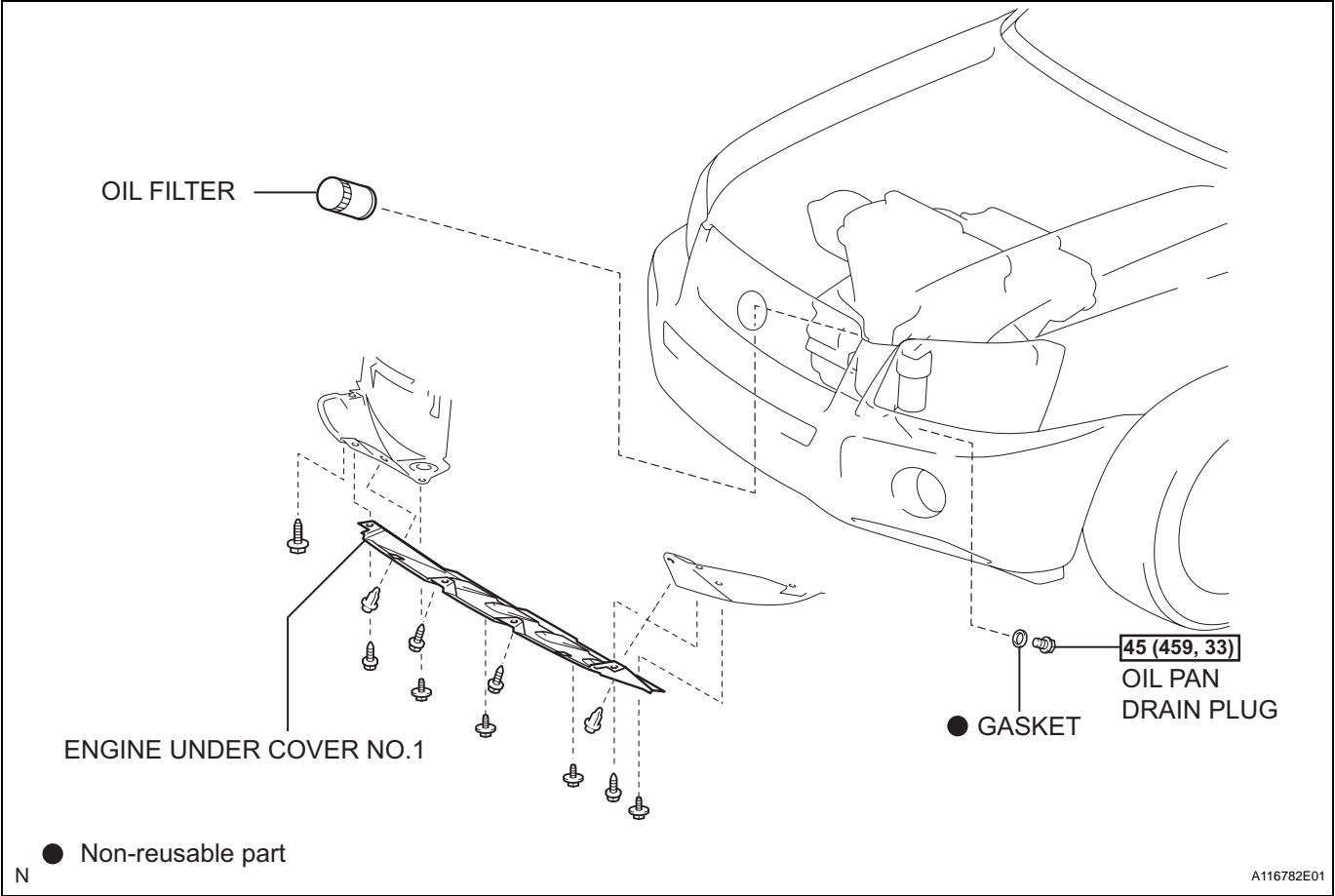


OIL FILTER

COMPONENTS



REPLACEMENT

CAUTION:

- Prolonged and repeated contact with engine oil will result in the removal of natural oils from the skin, leading to dryness, irritation and dermatitis. In addition, used engine oil contains potentially harmful contaminants which may cause skin cancer.
- Precautions should be taken when replacing engine oil to minimize the risk of your skin making contact with used engine oil. Wear protective clothing and gloves. Wash your skin thoroughly with soap and water, or use water-less hand cleaner to remove any used engine oil. Do not use gasoline, thinners, or solvents.
- In order to preserve the environment, the used oil and used oil filter must be disposed of at designated disposal sites.

1. REMOVE ENGINE UNDER COVER NO.1 (See page [EM-95](#))

2. DRAIN ENGINE OIL

- Remove the oil filler cap.
- Remove the oil drain plug, and drain the oil into a container.
- Clean and install the oil drain plug with a new gasket.

Torque: 45 N*m (459 kgf*cm, 33 ft.*lbf)

3. REMOVE OIL FILTER

- Using SST, remove the oil filter.

SST 09228-07501

4. INSTALL OIL FILTER

- Check and clean the oil filter installation surface.
- Apply clean engine oil to the gasket of a new oil filter.
- Lightly screw the oil filter into place, and tighten it until the gasket contacts the seat.

- Using SST, tighten it an additional 3/4 turn.

SST 09228-07501

5. ADD ENGINE OIL

- Add new oil.

Specification

Item	Capacity
Drain and refill with oil filter change	4.7 liters (5.0 US qts, 4.1 Imp. qts)
Drain and refill without oil filter change	4.5 liters (4.8 US qts, 4.0 Imp. qts)
Dry fill	5.5 liters (5.8 US qts, 4.8 Imp. qts)

6. CHECK FOR ENGINE OIL LEAKS

7. INSTALL ENGINE UNDER COVER NO.1 (See page [EM-115](#))

